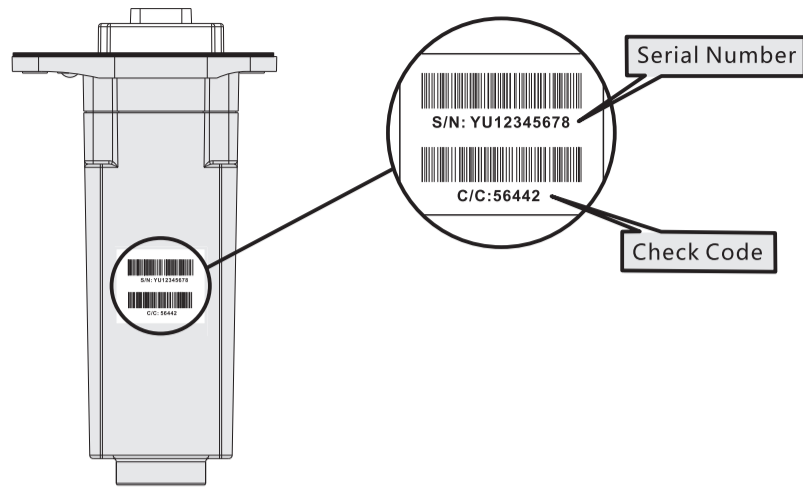


# ShineLan

## Quick Installation Guideline

### Step 1. Get the Serial Number and Check Code

There are Serial Number and Check Code on the outer casing of the ShineLan. Please write them down for Step 3 to use.



For more info, please download the user manual from <http://server.growatt.com>

T +86 755 2747 1942 F +86 755 2747 2131

E info@ginverter.com W www.growatt.com

### Step 2. Electrical Connection

Take the waterproof plate down from RS-232 port on inverter.

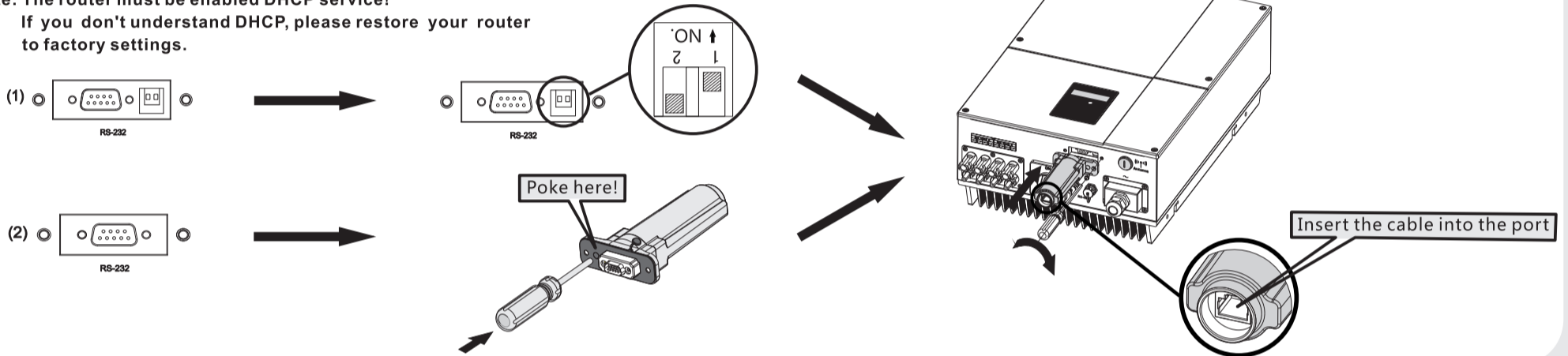
If the RS-232 port is compliant with the specification (1), please turn on the DIP switch, then plug the ShineLan to the inverter directly via the RS-232 and lock screws.

If the RS-232 port is compliant with the specification (2), please poke the rubber plug in the waterproof cushion, then plug the ShineLan to the inverter and lock screws.

After that, Please connect the ShineLan to a router via cable.

**Note: The router must be enabled DHCP service!**

**If you don't understand DHCP, please restore your router to factory settings.**



### Step 3. Registration

#### 3.1 Register Account

Web browser: <http://server.growatt.com>

Fill in the required information according to prompt.

**Note: The field "Data Logger SN" and "Data Logger verification code" in the below table are just the Serial Number and the Check Code you got from Step 1.**

Register	
User name	*
Password	*
Password repeat	*
Email	*
Data Logger SN	*
YU12345678	
Data Logger verification code	*
56442	
Time zone	*
Language	*
Validate code	
UTXV	
<input checked="" type="checkbox"/> I have read and agree <ShineServer terms of use>	

Input the Serial Number of the ShineLan

Input the Check Code of the ShineLan

#### 3.2 Creating New Plant

A. Login the ShineServer, and click on "New Plant" at main page to create a plant.

+ New plant

Plant name

B. Enter the plant information → Save

New plant	
1. Set installation info	
Plant name:	My plant
Installation date:	2012-11-22
System power(KW):	35
2. Set location	
Country:	China
City:	Beijing
Time zone:	GMT +8
3. Set income formula(Set 1kwh as the conversion standard)	
Capital income:	1.20
Standard coal saved ( kg ):	0.400
CO <sub>2</sub> emission reduce ( kg ):	0.997
SO <sub>2</sub> emission reduce ( kg ):	0.030 RMB(Y)
4. Set plant profile	
Images of plant:	Browse...
5. Select data logger	
Unselect	Selected
YU12345678	Move the ShineLan to the right box
Save	

#### 3.3 Adding ShineLan

**Note: If you have only one ShineLan, the step is not need.**

Click on "Setting" → "Device Management" → "Data logger" → "Add"

→ Enter the serial number and check code of the ShineLan

→ Select the owned plant → "Save".

Setting									
<ul style="list-style-type: none"> <li>User manage</li> <li>Plant management</li> <li>Device management</li> <li><b>Data logger</b></li> <li>Inverter</li> </ul>	<p>Data logger list + Add</p> <table border="1"> <thead> <tr> <th>No.</th> <th>SN</th> <th>Alias</th> <th>Type</th> </tr> </thead> <tbody> <tr> <td>1</td> <td>YU12345678</td> <td>YU12345678</td> <td>ShineLan</td> </tr> </tbody> </table>	No.	SN	Alias	Type	1	YU12345678	YU12345678	ShineLan
No.	SN	Alias	Type						
1	YU12345678	YU12345678	ShineLan						

Data logger registration	
Data logger SN:	Input the Serial Number of another ShineLan
Data logger security code:	
Plant for the data logger:	Input the Check Code of another ShineLan
Save Cancel	